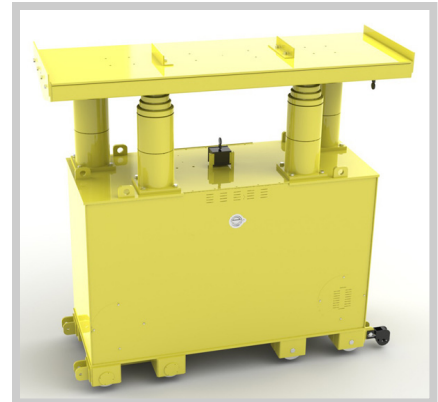


EZ fter

EZ400

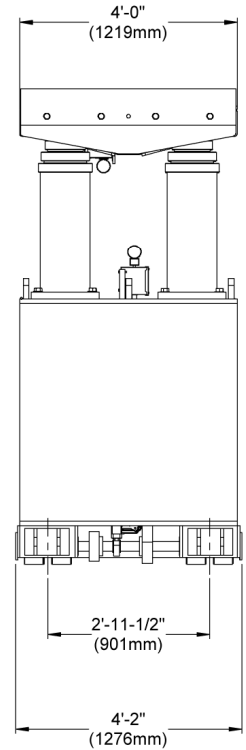
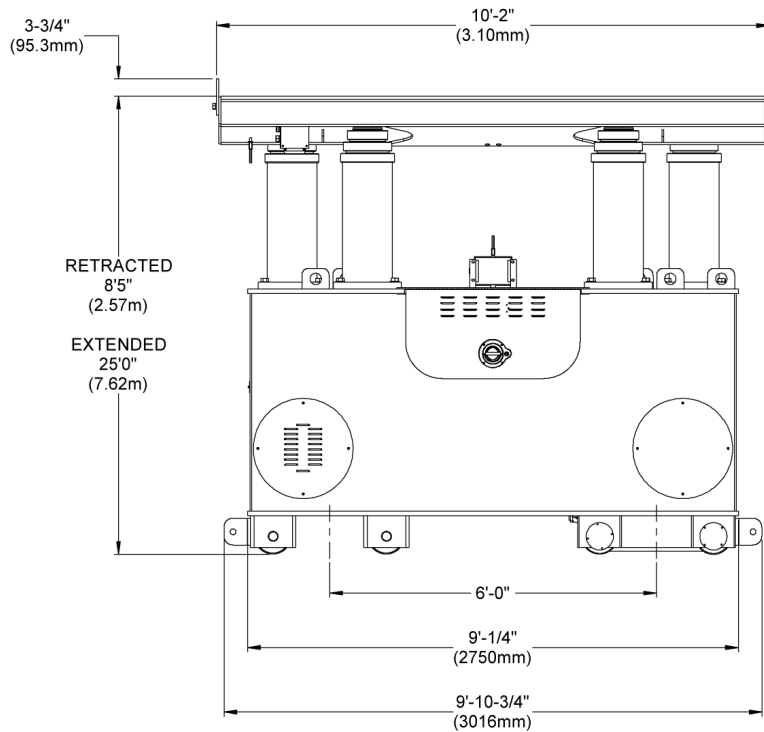


- **Synchronized Lifting** prevents load shift by keeping up to 4 legs at the same height.
- **Synchronized Travel** keeps up to 4 legs traveling at the same speed.
- **Pendant or Radio Remote Control** gives the operator the freedom to observe the lift from the most advantageous location.
- **Large Digital Display** keeps the operator informed of all relevant information related to the lifting and travel operations.
- **Self Propelled Continuous Travel** with ramp up and ramp down proportional control.
- **Large Body and Header Plate** provides unparalleled stability and a large foundation for different rigging configurations.
- **Four Cylinders per Leg** do the lifting. Three cylinders are capable of supporting the load in the event of a cylinder failure.
- **Powered by Electricity** means no exhaust emissions and minimizes noise during operation.
- **Self Contained Hydraulics** simple setup and operation.
- **Rugged Design** meets or exceeds all applicable standards.



RIGGERS[™]
MANUFACTURING COMPANY





EZ400 SPECIFICATIONS

Lift Capacity: 400 tons @ 13'9.5" (362 tonnes @ 4.2 m) Extension
 200 tons @ 25'0" (181 tonnes @ 7.62 m) Full Extension

Total Weight (Each Leg): 18,000 pounds (8,165 kg) per leg

Reservoir Capacity: 200 gallons (757 L)

Operating Voltage: 440v 60Hz or 380v 50Hz

Current Draw: One Leg—21 Amps

Two Legs—42 Amps

Circuit Rating: 60 Amps

Horsepower: 15 hp

Cylinders: 3 Stage Telescopic



LOAD CHART

STAGE	HEIGHT	CAPACITY
1st	8'5" (3.33m) to 13'9.5" (4.2m)	400 tons (362mt)
2nd	13'9.5" (4.2m) to 19'4" (5.89m)	300 tons (272mt)
3rd	19'4" (5.89m) to 25'0" (7.62m)	200 tons (181mt)