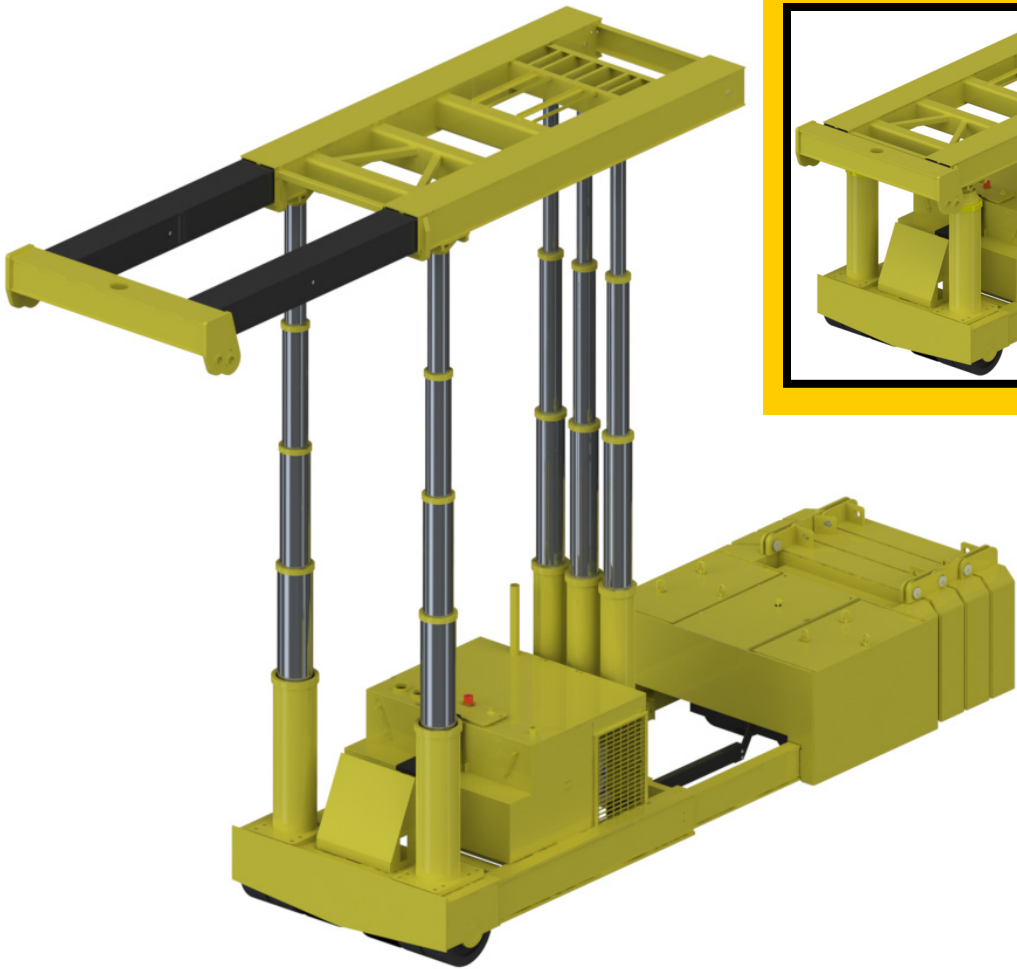


MODEL  
**TL220BW TRILIFTER**  
**110 TON (100 TONNE)**



**THE ULTIMATE RIGGING MACHINE**



P.O. Box 506 Dixon, IL 61021 Phone: +1-815-288-7626 Fax: +1-815-288-7634  
riggers@riggers.com www.riggers.com

# TL220BW STANDARD EQUIPMENT

## ENGINE:

Cummins Diesel Engine: QS4.5P  
160 hp (116 Kw) intermittent @ 2500 rpm  
U.S. EPA Tier 3  
CARB Tier 3  
EU Stage III  
Torque @ 1500 rpm, 466 ft-lbs (632 N-m)

## PUMP:

Sundstrand 90 series drive pump

## CONTROL SYSTEM:

CARL (Computer Assisted Remote Lifting) Control System. Monitors Lift Height, Boom Extension, Pressure, and Counterweight Load Pin. Automatic Shutdown for overload conditions. Large easy to read display screen with push button navigation and dial adjustment.

## CONTROLS:

Separate controls for each function. Combination of foot pedal, joystick, and push button controls allows for multiple functions to be performed at the same time.

## DRIVE:

Poclain MK35 drive motors (qty. 3)  
(2) in front, (1) in rear steering box.

**Electronic Control** of travel speed.

**Posi Drive Feature** for increased traction.

## WHEELS:

**Front:** qty. (4)

Diameter: 28" (711 mm)

Width: (2) @ 24" (610 mm) and (2) @ 16" (406 mm)

**Rear:** qty. (2)

Diameter: 28" (711 mm)

Width: 16" (406 mm)

Replaceable polyurethane composition

## STEERING:

90 degree steering of rear wheels.

## OSCILLATING REAR STEERING BOX:

Keeps all steering wheels in contact with ground.

## GRADABILITY:

Unloaded maximum grade is 20%

Loaded maximum grade is 8%

## GROUND BEARING PRESSURE:

Loaded Front Tires: 634 psi maximum (44.5 kg/cm<sup>2</sup>)

Unloaded Rear Tires: 502 psi maximum (35.3 kg/cm<sup>2</sup>)

## TRAVEL SPEED UNLOADED:

Travel Mode - High Gear = 0.0 to 1.70 mph (2.73 km/h)

Travel Mode - Low Gear = 0.0 to 0.86 mph (1.38 km/h)

Work Mode - Low Gear = 0.0 to 0.42 mph (0.67 km/h)

## TELESCOPING COUNTERWEIGHT:

Standard counterweight section telescopes 5' (1,524 mm) using (2) hydraulic cylinders. Push button control.

## LIFT CYLINDERS:

Qty. (5) double acting lift cylinders capable of lifting and lowering with a full load.

Safety holding valves installed on all cylinders. Spherical bearings ensure constant alignment with the boom.

**Front:** Qty. (2) 4-stage cylinders

**Rear:** Qty. (3) 3-stage cylinders

## BOOM TELESCOPE CYLINDERS:

Twin double-acting single-stage cylinders capable of telescoping the boom in and out with a full load. Safety holding valves are installed on both cylinders.

## LIFTING EYES:

Qty. (2) located on corners of boom with 55 ton (50 tonne) capacity each.

## WEIGHT:

58,200 lbs. (26,400 kg)

Standard "A" counterweight included

## COUNTERWEIGHTS:

"A" - non-removable counterweight installed in unit

"B" - qty. (2) - 8,270 lbs. (3,501 kg) each.

Total "B" Weight - 16,540 lbs. (7,002 kg) total

"C" - qty. (1) - 9,200 lbs. (4,175 kg)

"D" - qty. (1) - 9,200 lbs. (4,175 kg)

"E" - qty. (1) - 9,200 lbs. (4,175 kg)

## TIE DOWN / LIFTING EYES:

Tie down / lifting eyes installed for securing unit during transport and for lifting of the unit.

## DRIVER PROTECTION GUARD:

Structural overhead guard for operator protection.

## OTHER STANDARD FEATURES:

Back up alarm, horn, strobe light, operator seat complete with safety belt and electric switch.

# TL220BW OPTIONAL EQUIPMENT

(options shown on Model TL150BW)

## FORKLIFT ATTACHMENT



Turn the TriLifter into a 100 ton forklift with the addition of forks and a buttress.

## RIGGERS BOOM



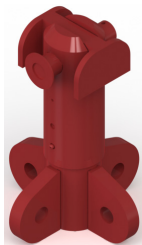
With the NEW Riggers Boom option, the TriLifter can reach an amazing 35' (10.6 m)!

Vertical mast fork lifts have nothing on the TriLifter!

## 110 TON SPINNER



Rotate loads 360° with the 110 ton spinner. The modular spinner can also be connected to a hydraulic gantry lifting link.

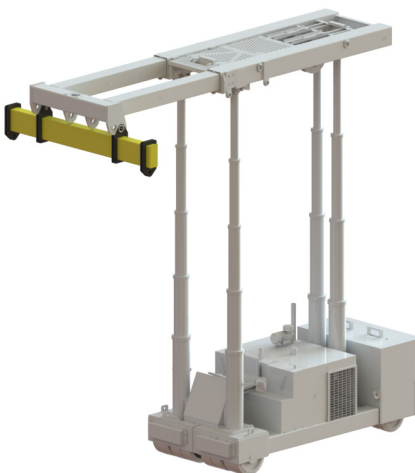


## RADIO REMOTE CONTROL

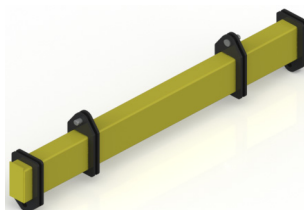


Operate the TriLifter from a Radio Remote instead of the operators seat. Allow your operator the optimal view of every lift. Emergency stop button standard.

## SPREADER BAR



The Spreader Bar increases the width of your unit and also assists in lifting offset loads.

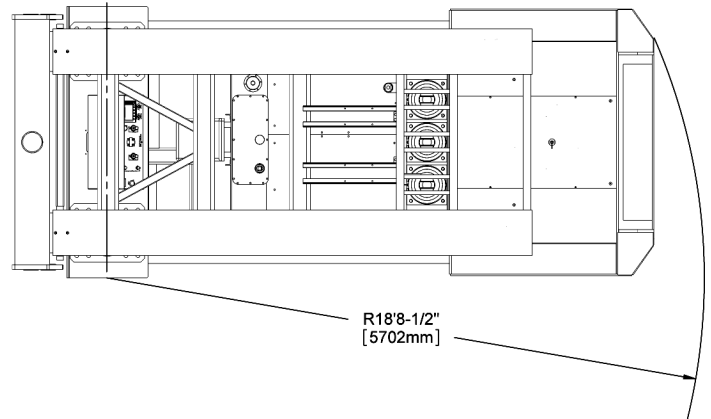
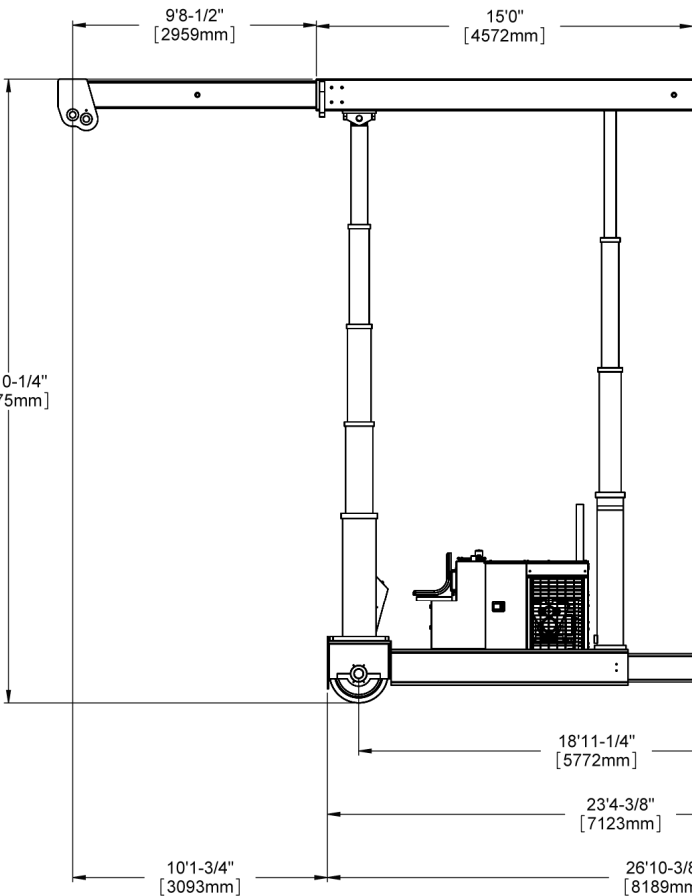
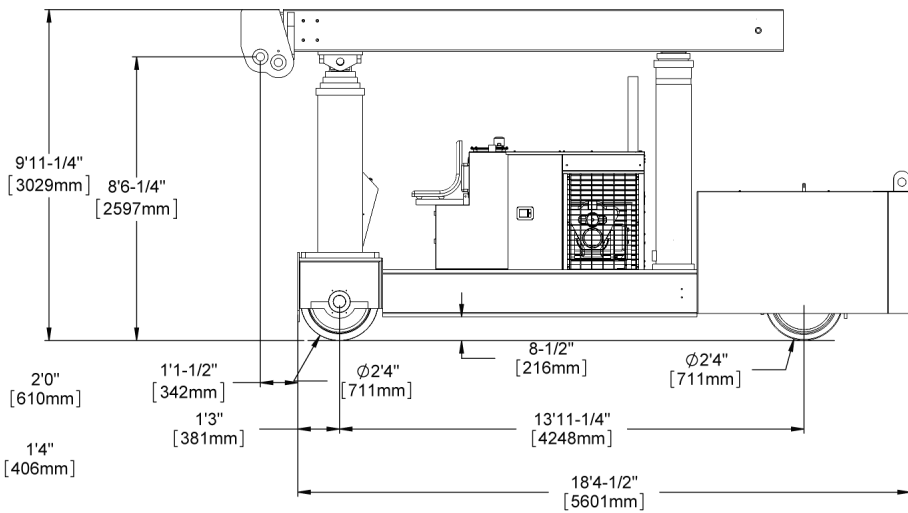
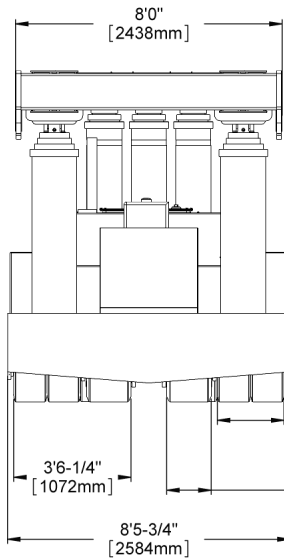
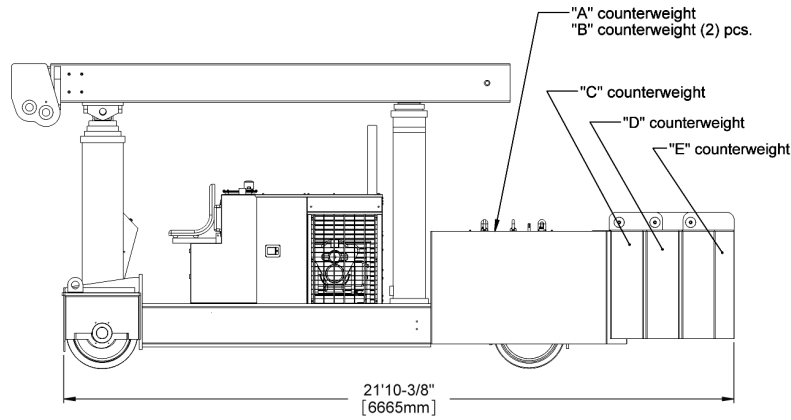


## JIB



Increase the range of your TriLifter to 20' (6m) from the front of your unit. The pin-on jib extends with the power boom.

# TL220BW DIMENSIONS



## TL220BW LOAD CHARTS (First 3 Cylinder Stages)

### TL220BW LIFTING CAPACITY FROM LIFTING EYES

BOOM EXTENSION INCHES	COUNTERWEIGHT IN POUNDS	COUNTERWEIGHT OUT POUNDS
36	162,200	220,200
48	131,500	178,600
60	110,500	150,200
72	95,400	129,600
84	83,900	113,900
96	74,900	101,700
108	67,600	91,800
120	61,600	83,700

## TL220BW LOAD CHARTS (4th Cylinder Stage)

### TL220BW LIFTING CAPACITY FROM LIFTING EYES

BOOM EXTENSION INCHES	COUNTERWEIGHT IN POUNDS	COUNTERWEIGHT OUT POUNDS
36	159,500	184,000
48	127,400	172,000
60	105,600	147,100
72	89,700	125,500
84	77,700	109,200
96	68,300	96,300
108	60,600	86,000
120	54,400	77,500

## TL220BW METRIC LOAD CHARTS (First 3 Cylinder Stages)

### TL220BW LIFTING CAPACITY FROM LIFTING EYES

BOOM EXTENSION MILLIMETERS	COUNTERWEIGHT IN KILOGRAMS	COUNTERWEIGHT OUT KILOGRAMS
914	73,630	99,970
1,219	59,700	81,080
1,524	50,160	68,190
1,829	43,310	58,830
2,134	38,090	51,710
2,348	34,000	46,170
2,743	30,690	41,670
3,048	27,960	37,990

## TL220BW METRIC LOAD CHARTS (4th Cylinder Stage)

### TL220BW LIFTING CAPACITY FROM LIFTING EYES

BOOM EXTENSION MILLIMETERS	COUNTERWEIGHT IN KILOGRAMS	COUNTERWEIGHT OUT KILOGRAMS
914	72,410	83,530
1,219	57,830	78,080
1,524	47,940	66,780
1,829	40,720	56,970
2,134	35,270	49,570
2,348	31,000	43,720
2,743	27,510	39,040
3,048	24,690	35,180