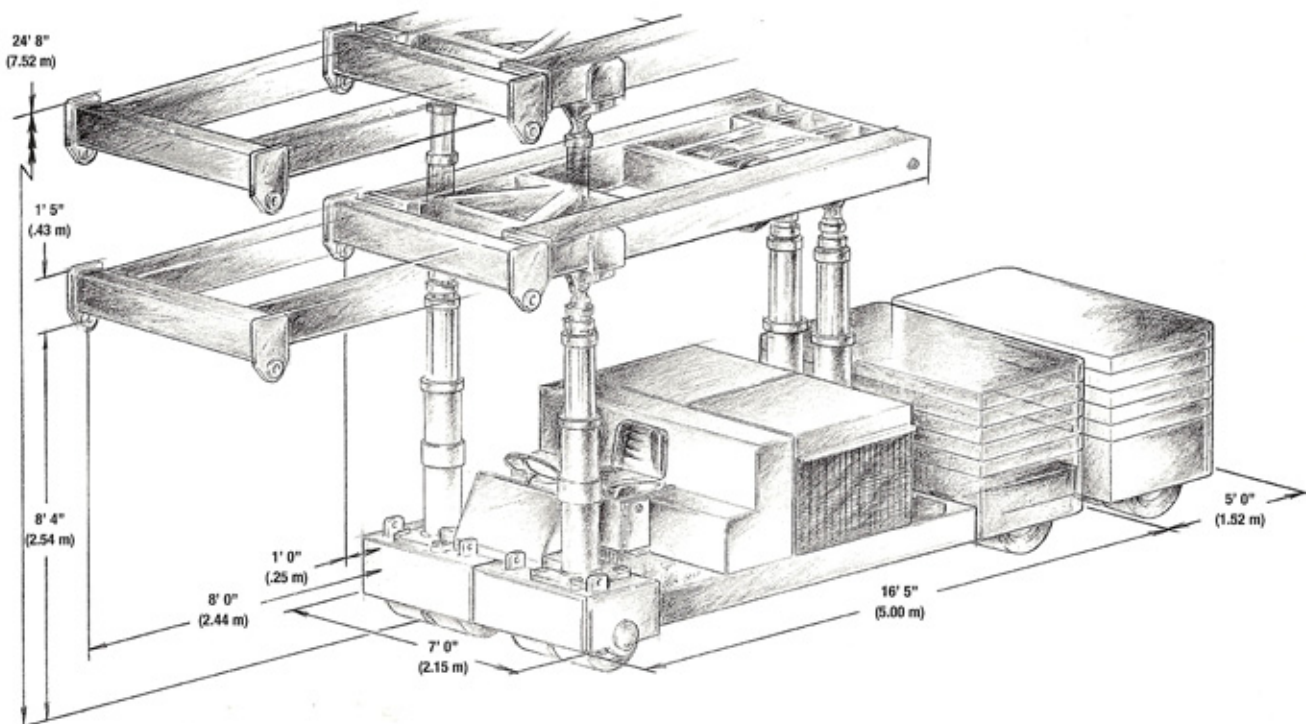


# 65 Tri Lifter™



**Maximum Lifting Capacity** 65.0 Tons (58.97 Metric Tons)

**Overall Length** 18' 0" (5.49 m) Fully Closed  
23' 0" (7.01 m) Counterweight Fully Extended

**Overall Width** 7' 0" (2.13 m)

**Overall Height** 9' 9" (2.97 m)

**Lift Height** 9' 9" to 24' 8" (2.97 m to 7.52 m)

**Weight without Counterweight** 19.0 Tons (17.24 Metric Tons)

**Weight with Counterweight** 35.0 Tons (31.75 Metric Tons)  
16.0 Tons (14.52 Metric Tons) of Modular removable counterweight

**Prime Power** Dual fuel- Gasoline/Propane

**Transmission** Hydrostatic

**Controls** Electric over hydraulic

**Steering** Rear wheel, Power steering pivot to 61 degrees

**Cylinders** Hydraulic, 4 stage, Double acting

**RIGGERS™**

# 65 Ton Tri Lifter Load Chart (16 Tons Counterweight)

		<b>C o u n t e r w e i g h t   E x t e n s i o n</b>					
		<b>0 in</b>	<b>24 in</b>	<b>36 in</b>	<b>48 in</b>	<b>60 in</b>	
<b>B o o m</b>	<b>E x t e n s i o n</b>	<b>24 in</b>	65 tons	65 tons	65 tons	65 tons	65 tons
	<b>36 in</b>	54	62	65	65	65	
	<b>48 in</b>	43	50	53	56	60	
	<b>60 in</b>	36	42	45	47	50	
	<b>72 in</b>	31	36	38	41	43	
	<b>84 in</b>	27	32	34	36	38	
	<b>96 in</b>	24	28	30	32	34	
		<b>With Optional 10 and 12 foot boom extension</b>					
<b>B o o m</b>		<b>108 in</b>	22 tons	25 tons	27 tons	29 tons	31 tons
		<b>120 in</b>	20	23	24	26	28
		<b>132 in</b>	18	21	22	24	26
		<b>144 in</b>	16	19	20	22	24

Note: Do not exceed 50 tons in top lift stage.

Based Upon 1.5:1 Safety Factor With Regard to Tipping

**RIGGERS™**